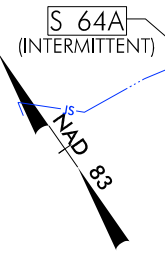


8/17/99

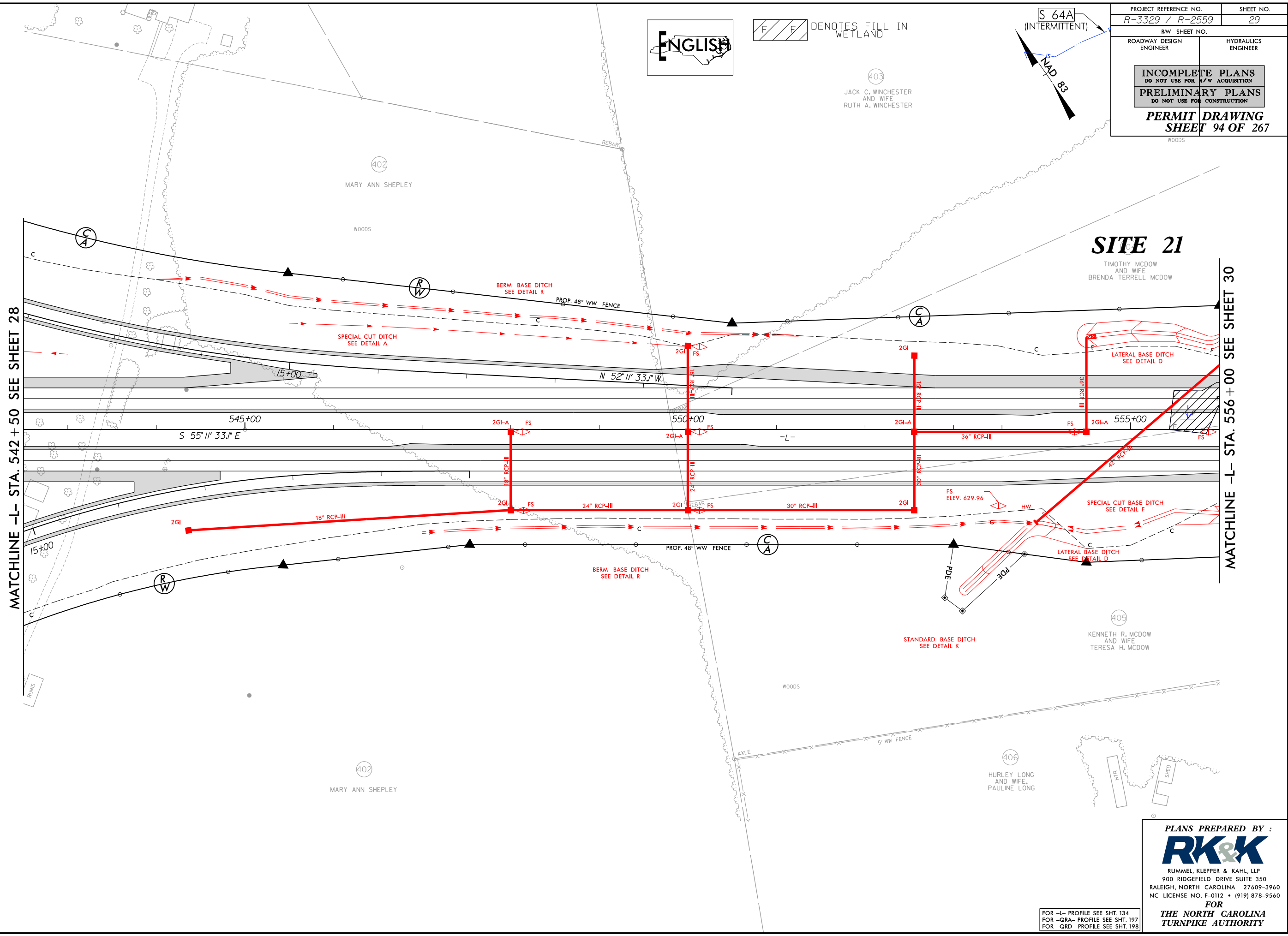
PROJECT REFERENCE NO. R-3329 / R-2559		SHEET NO. 29	
RW SHEET NO.		HYDRAULICS ENGINEER	
ROADWAY DESIGN ENGINEER		HYDRAULICS ENGINEER	
INCOMPLETE PLANS DO NOT USE FOR A/W ACQUISITION PRELIMINARY PLANS DO NOT USE FOR CONSTRUCTION			
PERMIT DRAWING SHEET 94 OF 267			



DENOTES FILL IN WETLAND



403
 JACK C. WINCHESTER
 AND WIFE
 RUTH A. WINCHESTER



\$\$\$TIME\$\$\$\$
 C:\Users\Public\Documents\Drawings\Section2B\R3329_R2559_HYD_PRM_WET_PSH029.dgn
 R:\Users\Public\Documents\Drawings\Section2B\R3329_R2559_HYD_PRM_WET_PSH029.dgn

FOR -L- PROFILE SEE SHT. 134
 FOR -QRA- PROFILE SEE SHT. 197
 FOR -QRD- PROFILE SEE SHT. 198

PLANS PREPARED BY :

 RUMMEL, KLEPPER & KAHL, LLP
 900 RIDGEFIELD DRIVE SUITE 350
 RALEIGH, NORTH CAROLINA 27609-3960
 NC LICENSE NO. F-0112 • (919) 878-9560
FOR
THE NORTH CAROLINA
TURNPIKE AUTHORITY

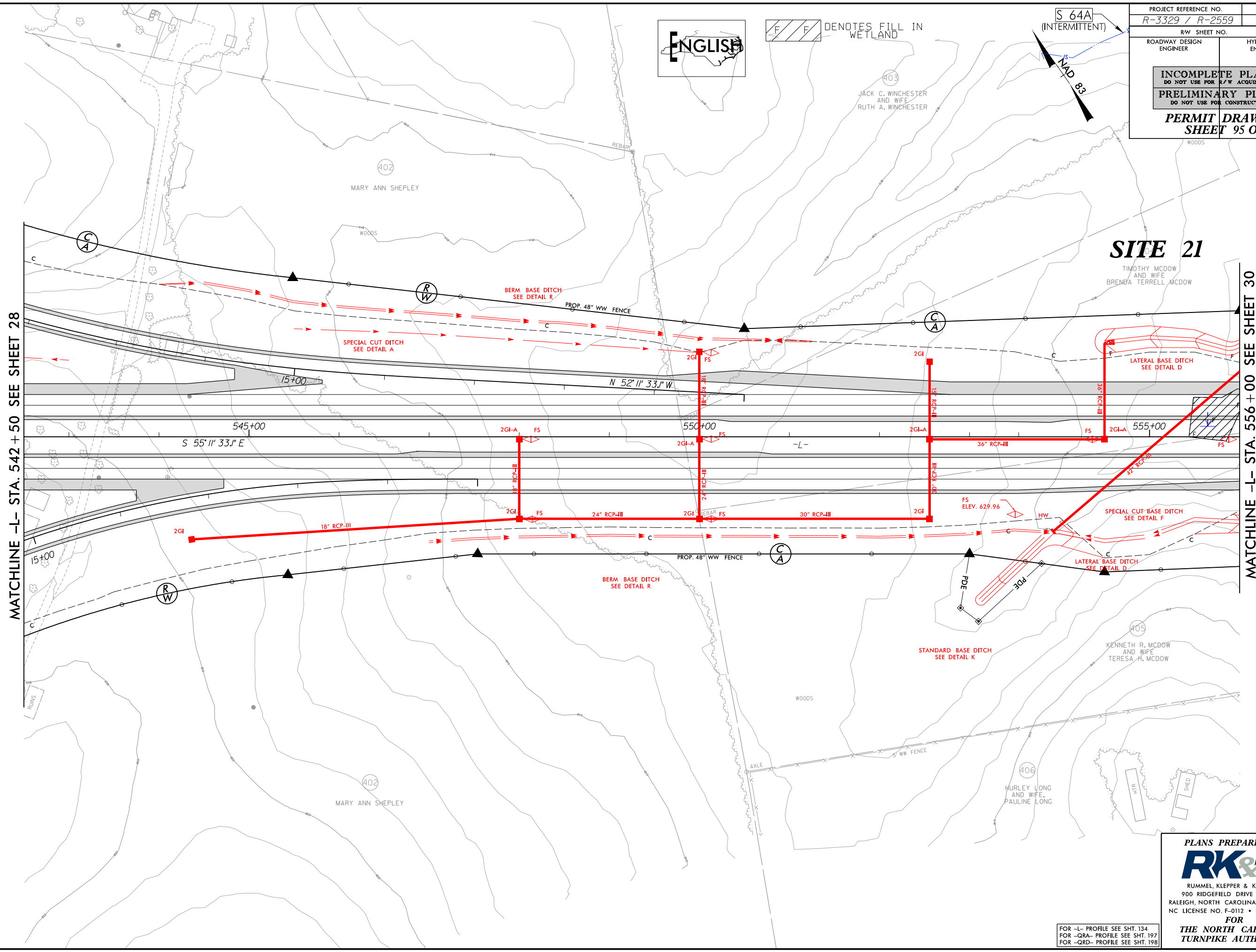
8/17/99

PROJECT REFERENCE NO. R-3329 / R-2559	SHEET NO. 29
RW SHEET NO.	
ROADWAY DESIGN ENGINEER	HYDRAULICS ENGINEER
INCOMPLETE PLANS DO NOT USE FOR R/W ACQUISITION PRELIMINARY PLANS DO NOT USE FOR CONSTRUCTION	
PERMIT DRAWING SHEET 95 OF 267	



DENOTES FILL IN WETLAND

S 64A
(INTERMITTENT)
NAD 83



MATCHLINE -L- STA. 542 + 50 SEE SHEET 28

MATCHLINE -L- STA. 556 + 00 SEE SHEET 30

\$\$\$\$\$\$TIME\$\$\$\$\$\$
 C:\Users\Public\Documents\Drawings\Section2B\R3329_R2559_HYD_PRM_WET_PSH029.cmn.dgn
 R:\Hydrolics\PERMITS_Environmental\Drawings\Section2B\R3329_R2559_HYD_PRM_WET_PSH029.cmn.dgn

FOR -L- PROFILE SEE SHT. 134
 FOR -QRA- PROFILE SEE SHT. 197
 FOR -QRD- PROFILE SEE SHT. 198

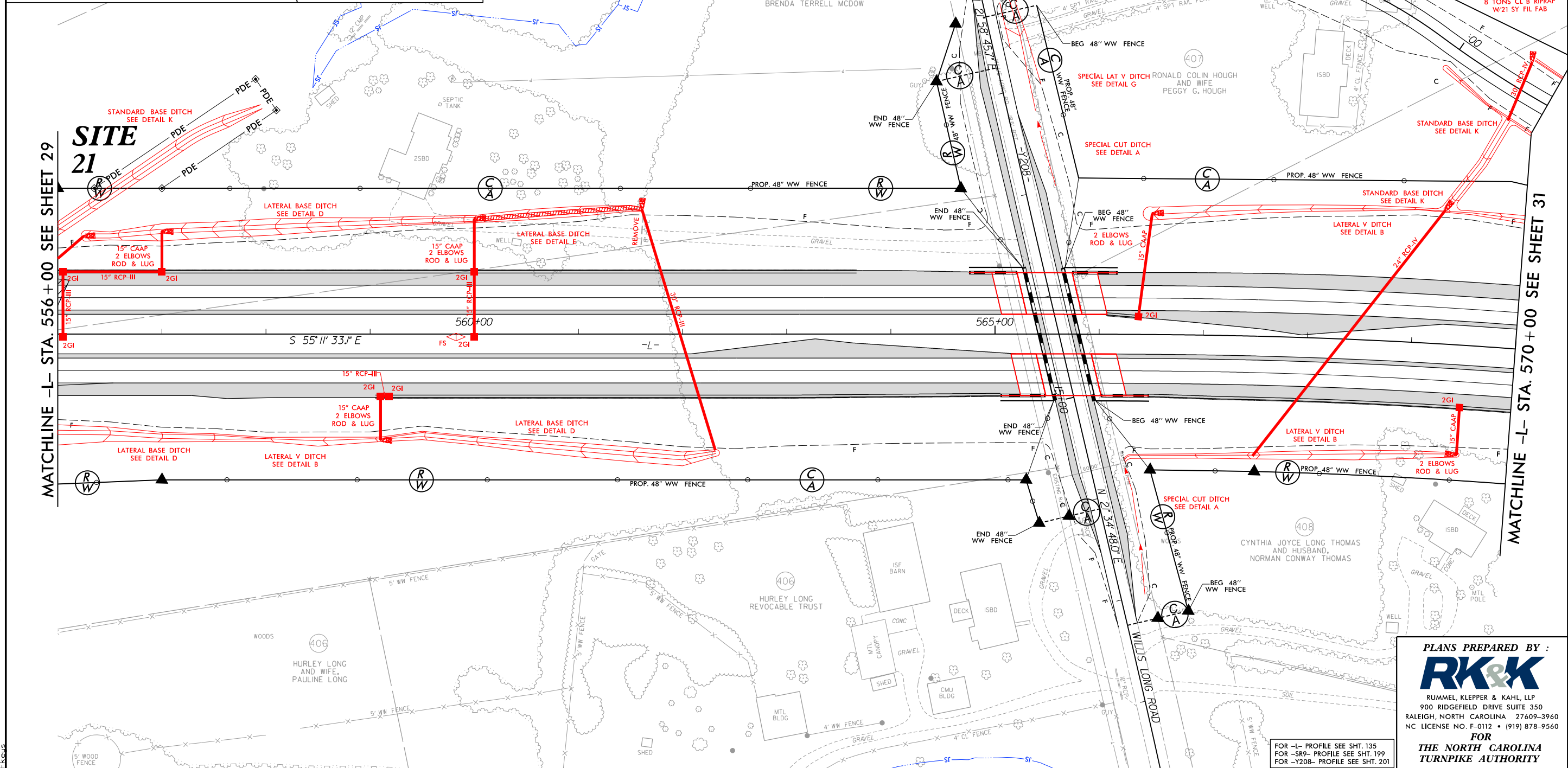
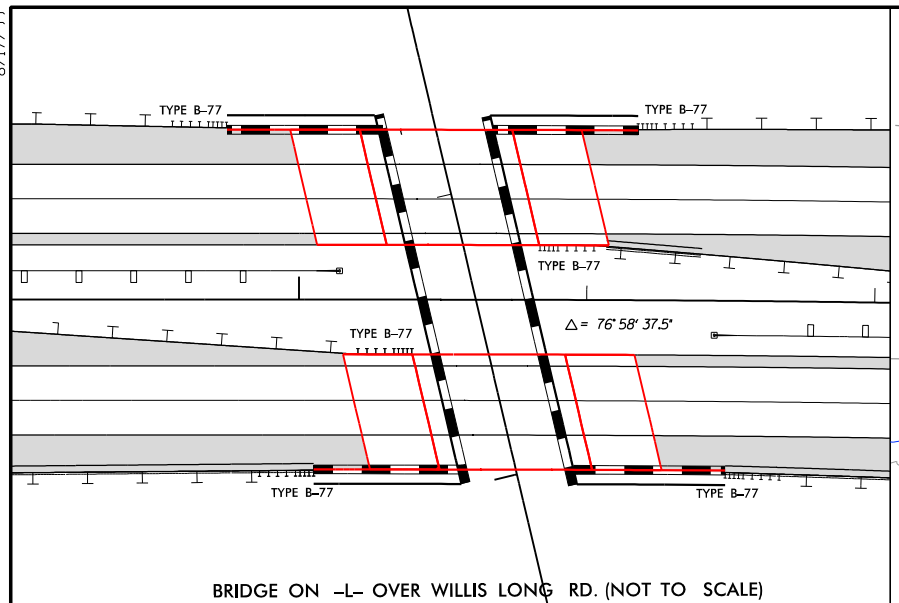
PLANS PREPARED BY :

 RUMMEL, KLEPPER & KAHL, LLP
 900 RIDGEFIELD DRIVE SUITE 350
 RALEIGH, NORTH CAROLINA 27609-3960
 NC LICENSE NO. F-0112 • (919) 878-9560
FOR
THE NORTH CAROLINA
TURNPIKE AUTHORITY

ENGLISH

DENOTES TEMPORARY IMPACTS IN SURFACE WATER
 DENOTES IMPACTS IN SURFACE WATER
 DENOTES MECHANIZED CLEARING
 DENOTES FILL IN WETLAND

SITE 22



8/17/99
 R:\Projects\Environmental\Drawings\Section2B\RR3329_R2559_HYD_PRM_WET_PSH030.dgn
 \$\$\$\$\$\$TIME\$\$\$\$\$\$
 \$\$\$\$\$\$DATE\$\$\$\$\$\$
 \$\$\$\$\$\$TIME\$\$\$\$\$\$
 \$\$\$\$\$\$DATE\$\$\$\$\$\$

PLANS PREPARED BY :

 RUMMEL, KLEPPER & KAHL, LLP
 900 RIDGEFIELD DRIVE SUITE 350
 RALEIGH, NORTH CAROLINA 27609-3960
 NC LICENSE NO. F-0112 • (919) 878-9560
 FOR
THE NORTH CAROLINA
TURNPIKE AUTHORITY

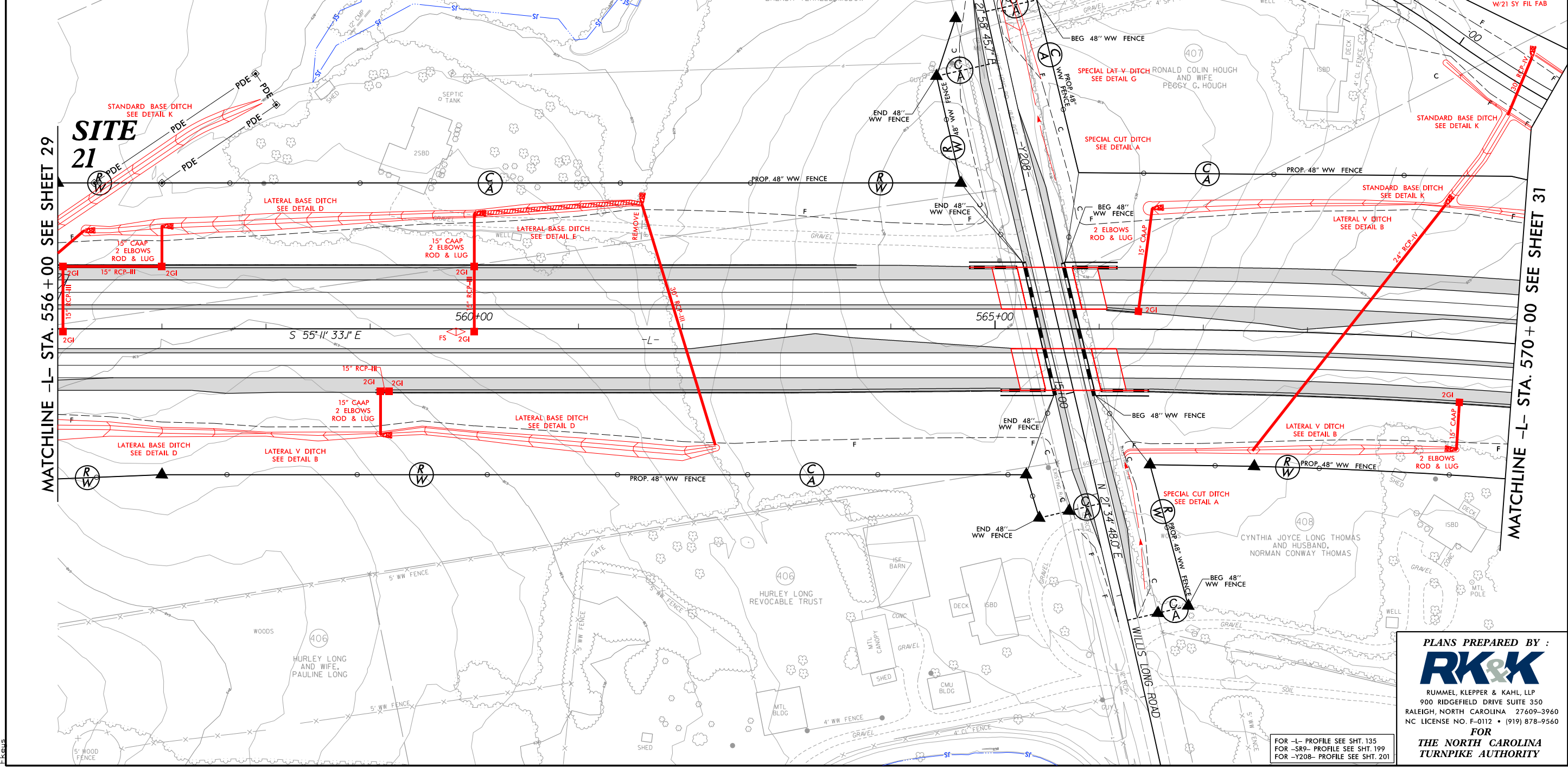
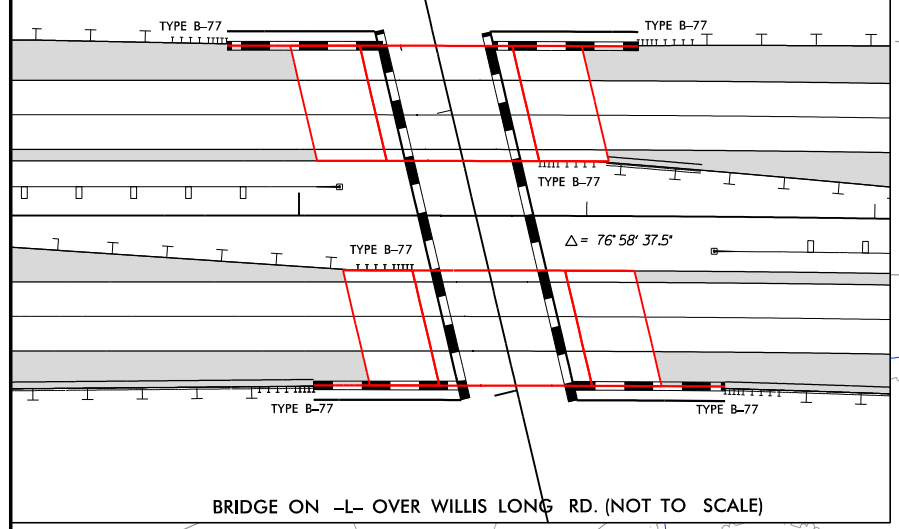
FOR -L- PROFILE SEE SHT. 135
 FOR -SR9- PROFILE SEE SHT. 199
 FOR -Y208- PROFILE SEE SHT. 201

8/17/99

PROJECT REFERENCE NO. R-3329 / R-2559	SHEET NO. 30
RW SHEET NO.	
ROADWAY DESIGN ENGINEER	HYDRAULICS ENGINEER
INCOMPLETE PLANS DO NOT USE FOR A/W ACQUISITION PRELIMINARY PLANS DO NOT USE FOR CONSTRUCTION PERMIT DRAWING SHEET 97 OF 267	

- DENOTES TEMPORARY IMPACTS IN SURFACE WATER
- DENOTES IMPACTS IN SURFACE WATER
- DENOTES MECHANIZED CLEARING
- DENOTES FILL IN WETLAND

SITE 22



C:\Users\james\Documents\Drawings\Section2B\Drawings\Hyd\PRM_WET_PSH030.com.dgn
 8/17/99
 11:58 AM
 11/17/99

PLANS PREPARED BY :

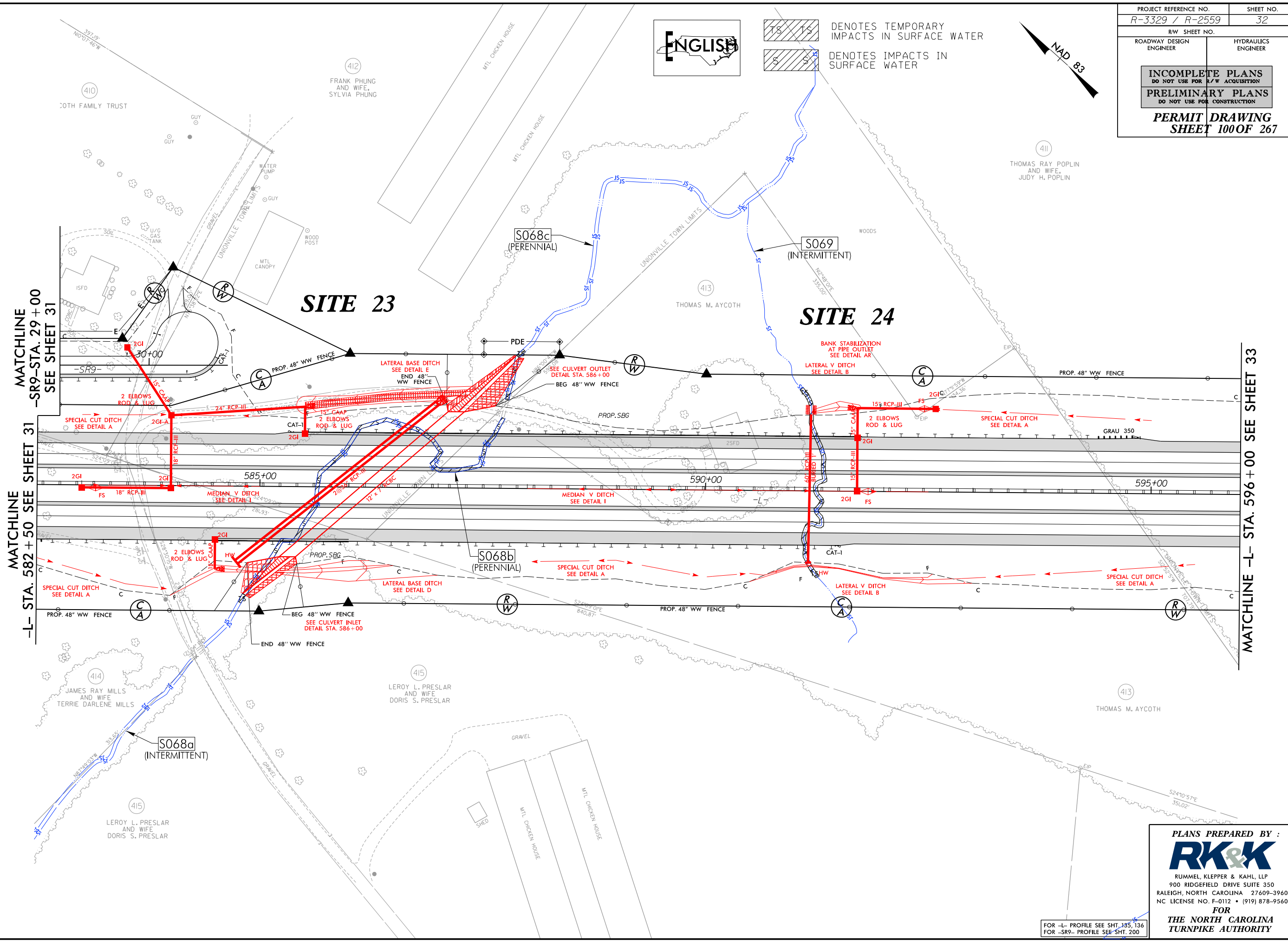
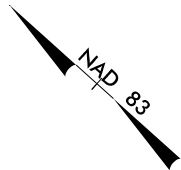
RUMMEL, KLEPPER & KAHL, LLP
 900 RIDGEFIELD DRIVE SUITE 350
 RALEIGH, NORTH CAROLINA 27609-3960
 NC LICENSE NO. F-0112 • (919) 878-9560
 FOR
THE NORTH CAROLINA
TURNPIKE AUTHORITY

FOR -L- PROFILE SEE SHT. 135
 FOR -SR9- PROFILE SEE SHT. 199
 FOR -Y208- PROFILE SEE SHT. 201

PROJECT REFERENCE NO. R-3329 / R-2559	SHEET NO. 32
RW SHEET NO.	
ROADWAY DESIGN ENGINEER	HYDRAULICS ENGINEER
INCOMPLETE PLANS DO NOT USE FOR A/W ACQUISITION PRELIMINARY PLANS DO NOT USE FOR CONSTRUCTION	
PERMIT DRAWING SHEET 100 OF 267	



DENOTES TEMPORARY IMPACTS IN SURFACE WATER
 DENOTES IMPACTS IN SURFACE WATER



MATCHLINE -SR9- STA. 29+00 SEE SHEET 31
 MATCHLINE -L- STA. 582+50 SEE SHEET 31

MATCHLINE -L- STA. 596+00 SEE SHEET 33

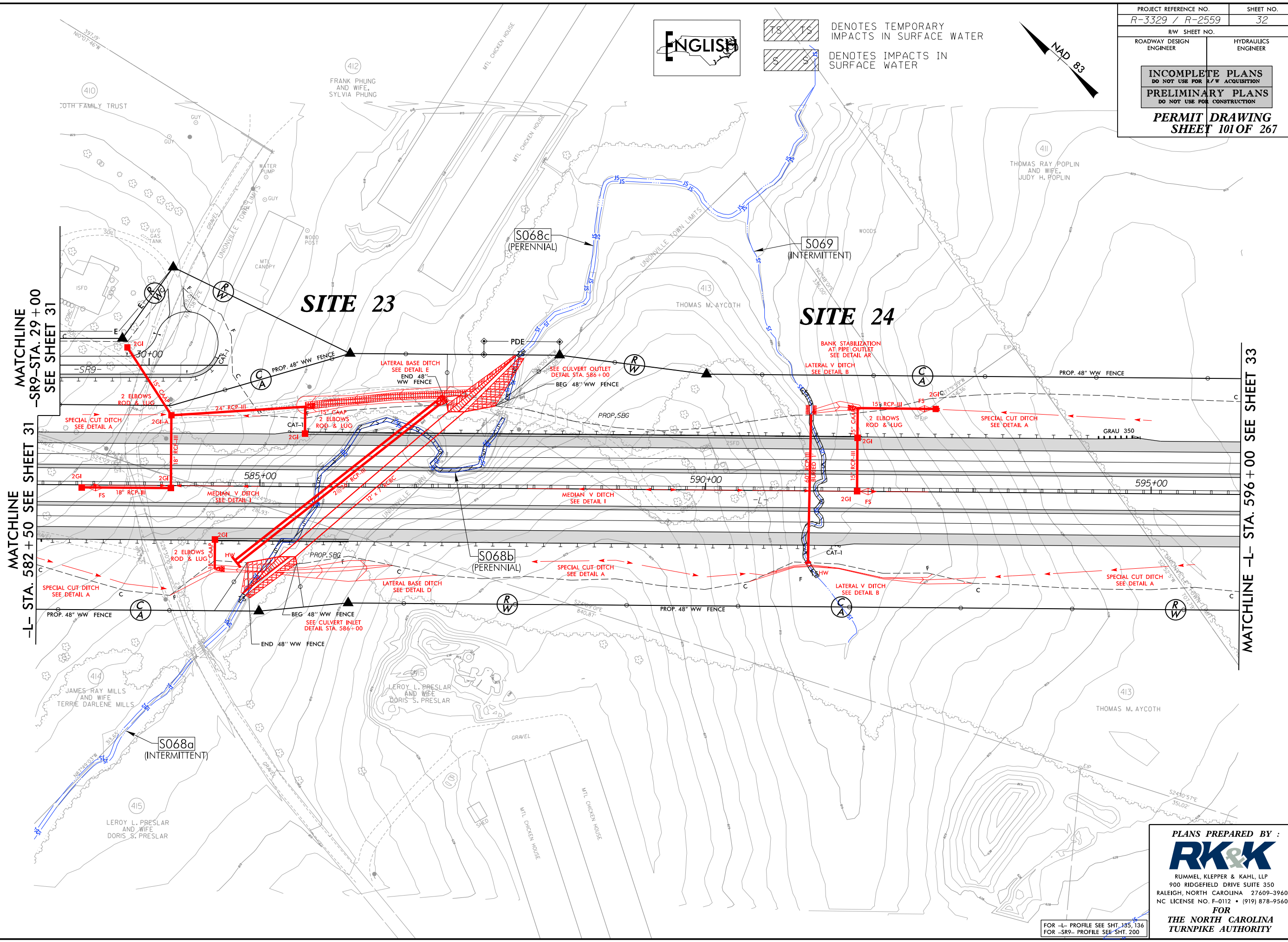
8/17/99
 C:\Users\jleu\Documents\Drawings\Section2B\Drawings\Hyd\PRM_WET_PSH032.dgn
 \$\$\$\$\$\$TIME\$\$\$\$\$\$
 \$\$\$\$\$\$DATE\$\$\$\$\$\$
 \$\$\$\$\$\$USER\$\$\$\$\$\$
 \$\$\$\$\$\$CPL\$\$\$\$\$\$
 \$\$\$\$\$\$PRJ\$\$\$\$\$\$

PLANS PREPARED BY :

 RUMMEL, KLEPPER & KAHL, LLP
 900 RIDGEFIELD DRIVE SUITE 350
 RALEIGH, NORTH CAROLINA 27609-3960
 NC LICENSE NO. F-0112 • (919) 878-9560
FOR
THE NORTH CAROLINA
TURNPIKE AUTHORITY

FOR -L- PROFILE SEE SHT. 135, 136
 FOR -SR9- PROFILE SEE SHT. 200

8/17/99
C:\Users\jleu\Documents\Drawings\Section2B\3329_R2559_HYD_PRM_WET_PSH032.cmc.dgn
\$\$\$\$\$TIME\$\$\$\$\$
R:\Users\jleu\Documents\PERMITS\Environmental\Drawings\Section2B\3329_R2559_HYD_PRM_WET_PSH032.cmc.dgn



DENOTES TEMPORARY IMPACTS IN SURFACE WATER
DENOTES IMPACTS IN SURFACE WATER


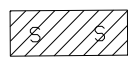
PROJECT REFERENCE NO. R-3329 / R-2559	SHEET NO. 32
RW SHEET NO.	
ROADWAY DESIGN ENGINEER	HYDRAULICS ENGINEER
INCOMPLETE PLANS DO NOT USE FOR A/W ACQUISITION	
PRELIMINARY PLANS DO NOT USE FOR CONSTRUCTION	
PERMIT DRAWING SHEET 101 OF 267	

PLANS PREPARED BY :
RK&K
RUMMEL, KLEPPER & KAHL, LLP
900 RIDGEFIELD DRIVE SUITE 350
RALEIGH, NORTH CAROLINA 27609-3960
NC LICENSE NO. F-0112 • (919) 878-9560
FOR
THE NORTH CAROLINA
TURNPIKE AUTHORITY

FOR -L- PROFILE SEE SHT. 135, 136
FOR -SR9- PROFILE SEE SHT. 200

8/17/99

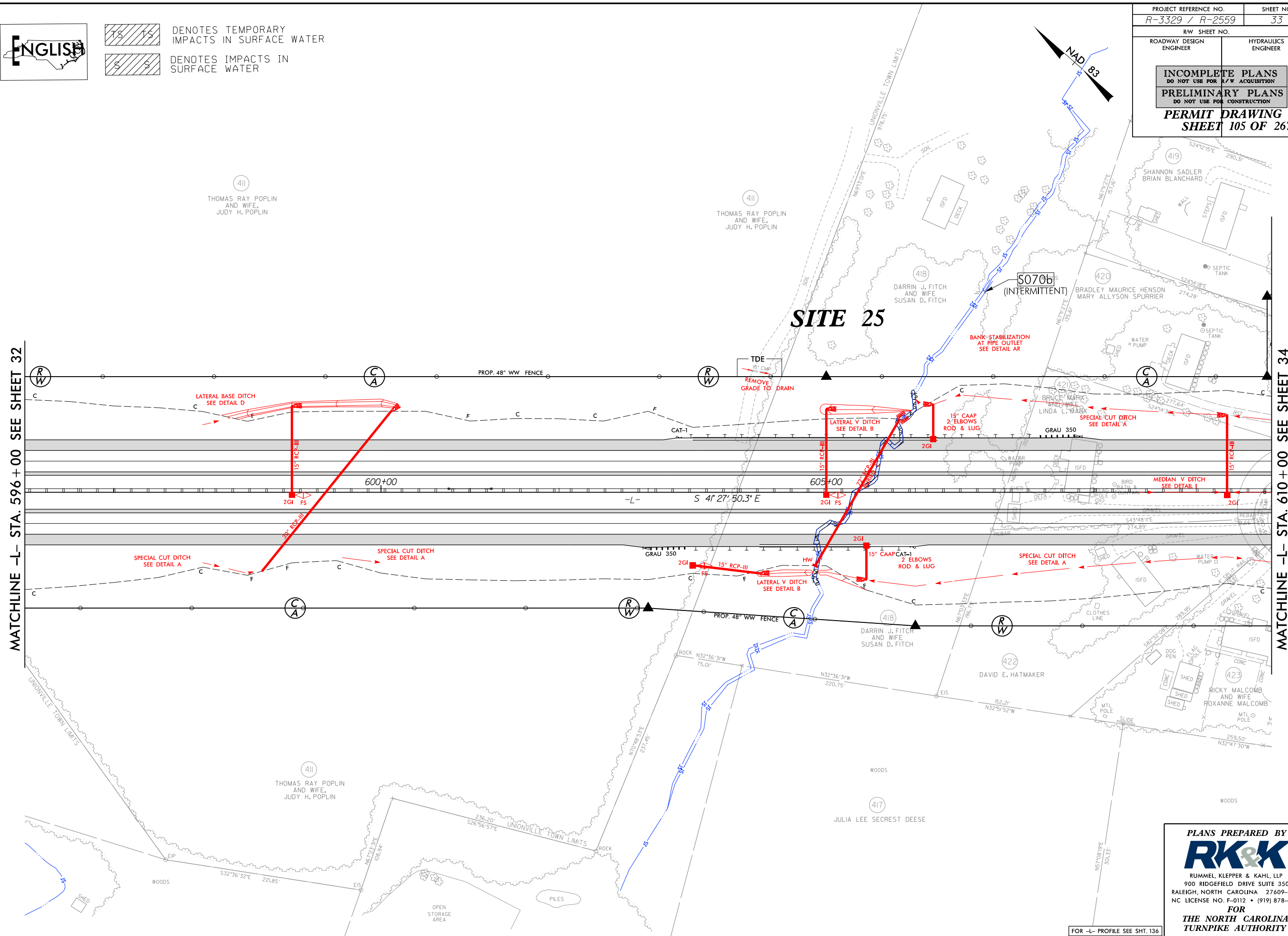


 DENOTES TEMPORARY IMPACTS IN SURFACE WATER
 DENOTES IMPACTS IN SURFACE WATER

PROJECT REFERENCE NO. R-3329 / R-2559	SHEET NO. 33
RW SHEET NO.	
ROADWAY DESIGN ENGINEER	HYDRAULICS ENGINEER
INCOMPLETE PLANS DO NOT USE FOR R/W ACQUISITION PRELIMINARY PLANS DO NOT USE FOR CONSTRUCTION PERMIT DRAWING SHEET 105 OF 267	


MATCHLINE -L- STA. 596 + 00 SEE SHEET 32

MATCHLINE -L- STA. 610 + 00 SEE SHEET 34

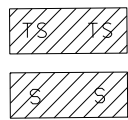


\$\$\$\$\$\$TIME\$\$\$\$\$
 C:\Users\luc\Documents\PERMITS_Environmental\Drawings\Section2B\R3329_R2559_HYD_PRM_WET_PSH033.dgn
 E:\

FOR -L- PROFILE SEE SHT. 136

PLANS PREPARED BY :

 RUMMEL, KLEPPER & KAHL, LLP
 900 RIDGEFIELD DRIVE SUITE 350
 RALEIGH, NORTH CAROLINA 27609-3960
 NC LICENSE NO. F-0112 • (919) 878-9560
FOR
THE NORTH CAROLINA
TURNPIKE AUTHORITY

8/17/99

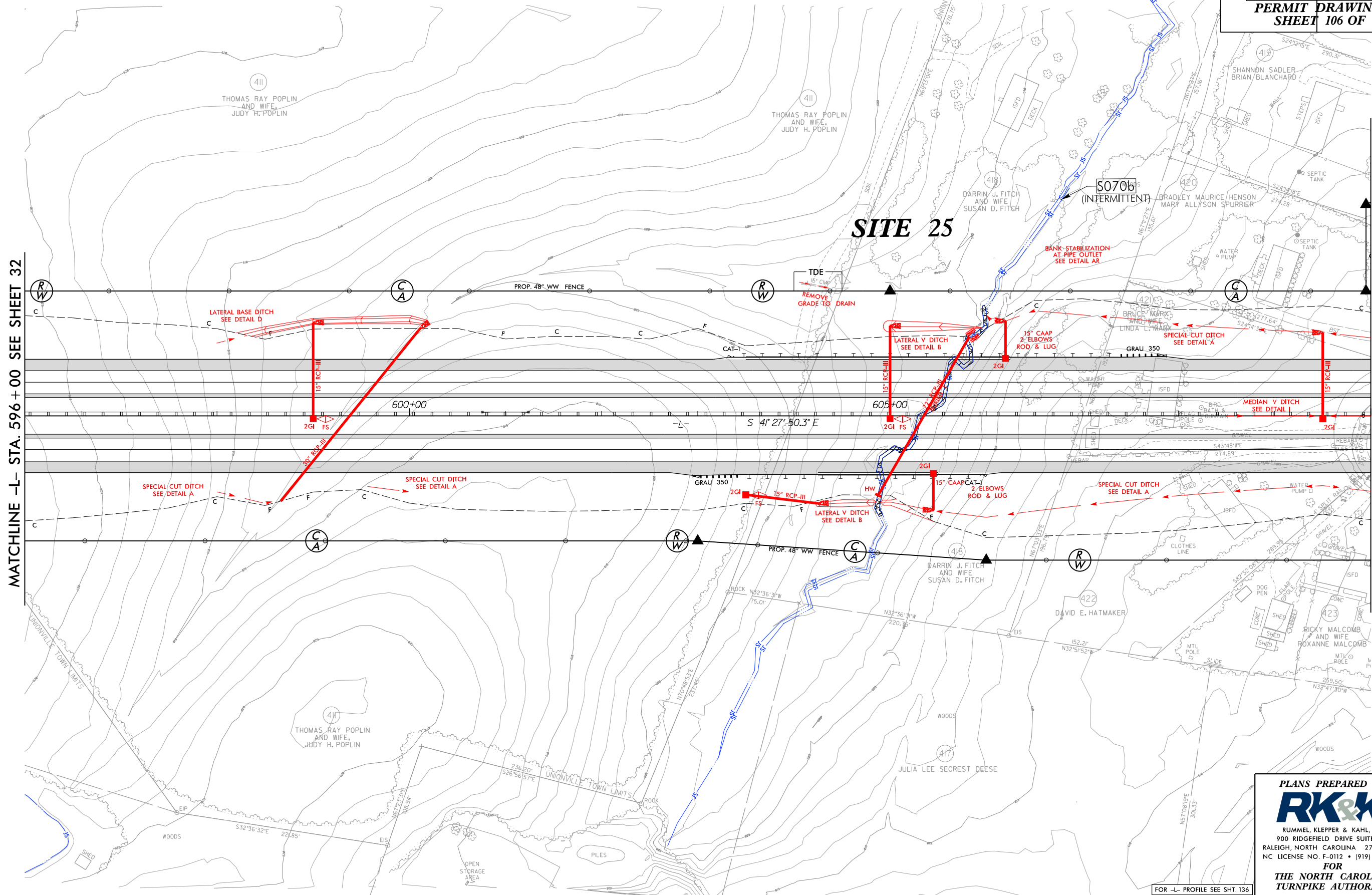


DENOTES TEMPORARY IMPACTS IN SURFACE WATER
DENOTES IMPACTS IN SURFACE WATER

PROJECT REFERENCE NO. R-3329 / R-2559	SHEET NO. 33
RW SHEET NO.	
ROADWAY DESIGN ENGINEER	HYDRAULICS ENGINEER
INCOMPLETE PLANS DO NOT USE FOR A/W ACQUISITION	
PRELIMINARY PLANS DO NOT USE FOR CONSTRUCTION	
PERMIT DRAWING SHEET 106 OF 267	

MATCHLINE -L- STA. 596+00 SEE SHEET 32

MATCHLINE -L- STA. 610+00 SEE SHEET 34



\$\$\$\$\$TIME\$\$\$\$\$
C:\Users\Public\Documents\Drawings\Section2B\R3329_R2559_HYD_PRM_WET_PSH033.com.dgn

FOR -L- PROFILE SEE SHT. 136

PLANS PREPARED BY :

RK&K

RUMMEL, KLEPPER & KAHL, LLP
900 RIDGEFIELD DRIVE SUITE 350
RALEIGH, NORTH CAROLINA 27609-3960
NC LICENSE NO. F-0112 • (919) 878-9560

FOR
THE NORTH CAROLINA
TURNPIKE AUTHORITY

BARRY C. WILLIAMS AND WIFE
AMY L. WILLIAMS

20' CITY OF MONROE
10' P.S.D.

MATCHLINE
-Y206- STA. 24+00
SEE SHEET 35

436

433

JAMES R. PRICE, II AND WIFE
TRACY K. PRICE

434

JAMES R. PRICE, II AND WIFE
TRACY K. PRICE

430

JAMES R. PRICE, II AND WIFE
TRACY K. PRICE

430

JAMES R. PRICE, II AND WIFE
TRACY K. PRICE

430

JAMES R. PRICE, II AND WIFE
TRACY K. PRICE

430

JAMES R. PRICE, II AND WIFE
TRACY K. PRICE

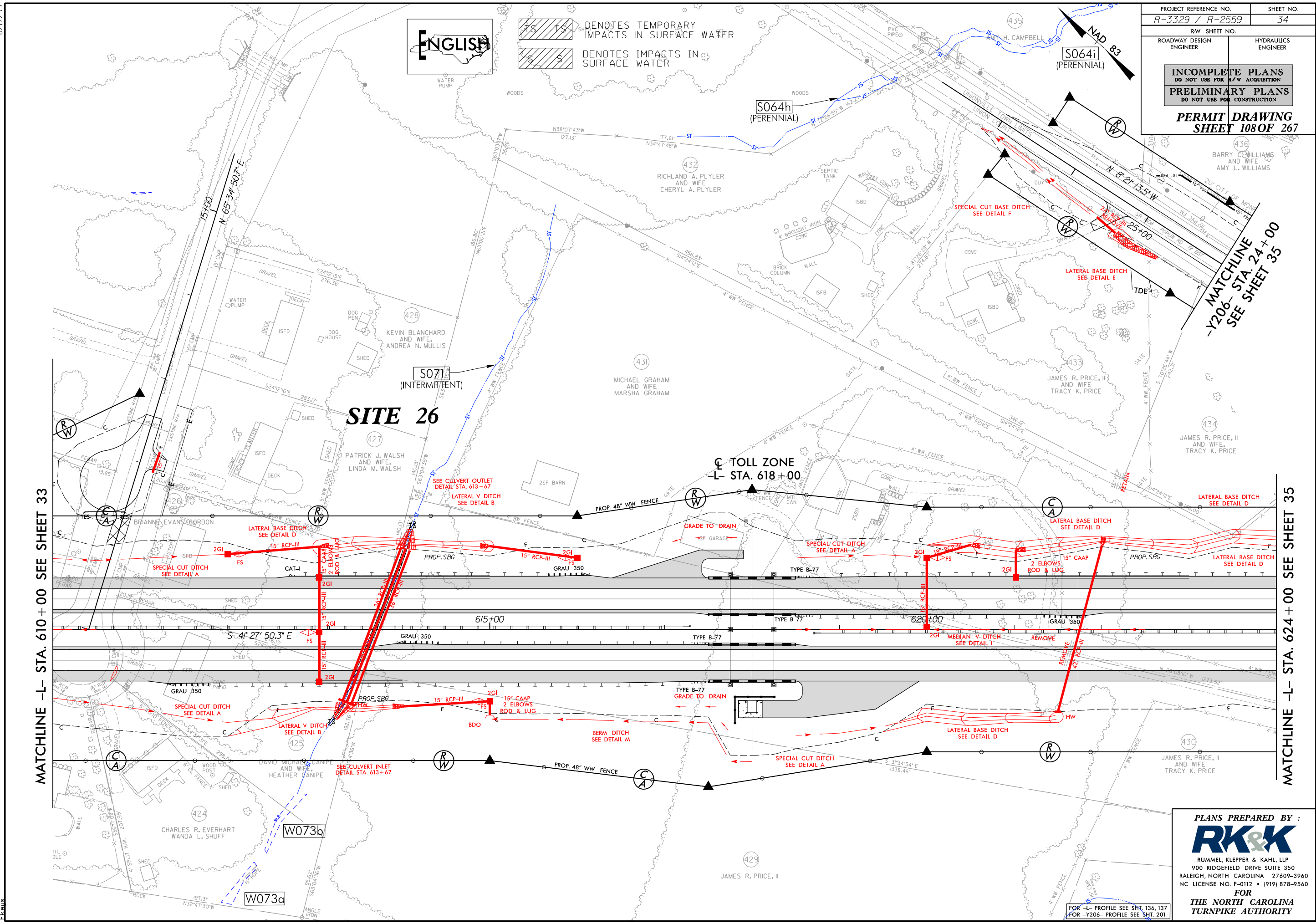
430

JAMES R. PRICE, II AND WIFE
TRACY K. PRICE

430

JAMES R. PRICE, II AND WIFE
TRACY K. PRICE

430

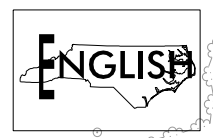


8/17/99
 C:\Users\Public\Documents\Drawings\Section2B\R3329_R2559_HYD_PRM_WET_PSH034.dgn

 TIME

MATCHLINE -L- STA. 610+00 SEE SHEET 33

MATCHLINE -L- STA. 624+00 SEE SHEET 35



DENOTES TEMPORARY IMPACTS IN SURFACE WATER
 DENOTES IMPACTS IN SURFACE WATER

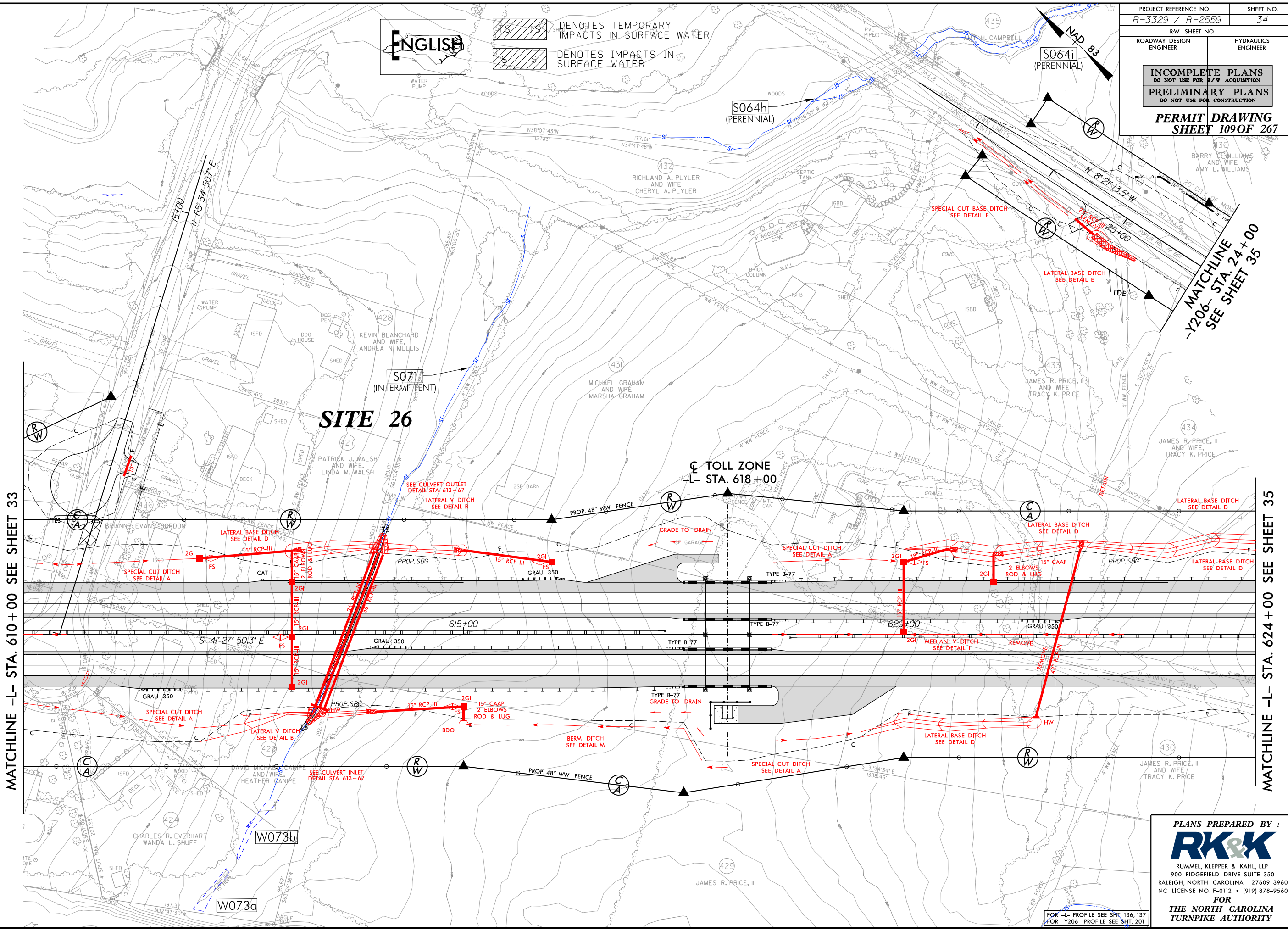
FOR -L- PROFILE SEE SHT. 136, 137
 FOR -Y206- PROFILE SEE SHT. 201

PLANS PREPARED BY :

 RUMMEL, KLEPPER & KAHL, LLP
 900 RIDGEFIELD DRIVE SUITE 350
 RALEIGH, NORTH CAROLINA 27609-3960
 NC LICENSE NO. F-0112 • (919) 878-9560
FOR
THE NORTH CAROLINA
TURNPIKE AUTHORITY

8/17/99
C:\Users\Public\Documents\Drawings\Section2\BR3329_R2559_HYD_PRR_WET_PSH034.com.dgn
\$\$\$\$\$TIME\$\$\$\$\$
R:\Hydrolics\PERMITS_Environmental\Drawings\Section2\BR3329_R2559_HYD_PRR_WET_PSH034.com.dgn

PROJECT REFERENCE NO. R-3329 / R-2559	SHEET NO. 34
RW SHEET NO.	
ROADWAY DESIGN ENGINEER	HYDRAULICS ENGINEER
INCOMPLETE PLANS DO NOT USE FOR A/W ACQUISITION	
PRELIMINARY PLANS DO NOT USE FOR CONSTRUCTION	
PERMIT DRAWING SHEET 109 OF 267	



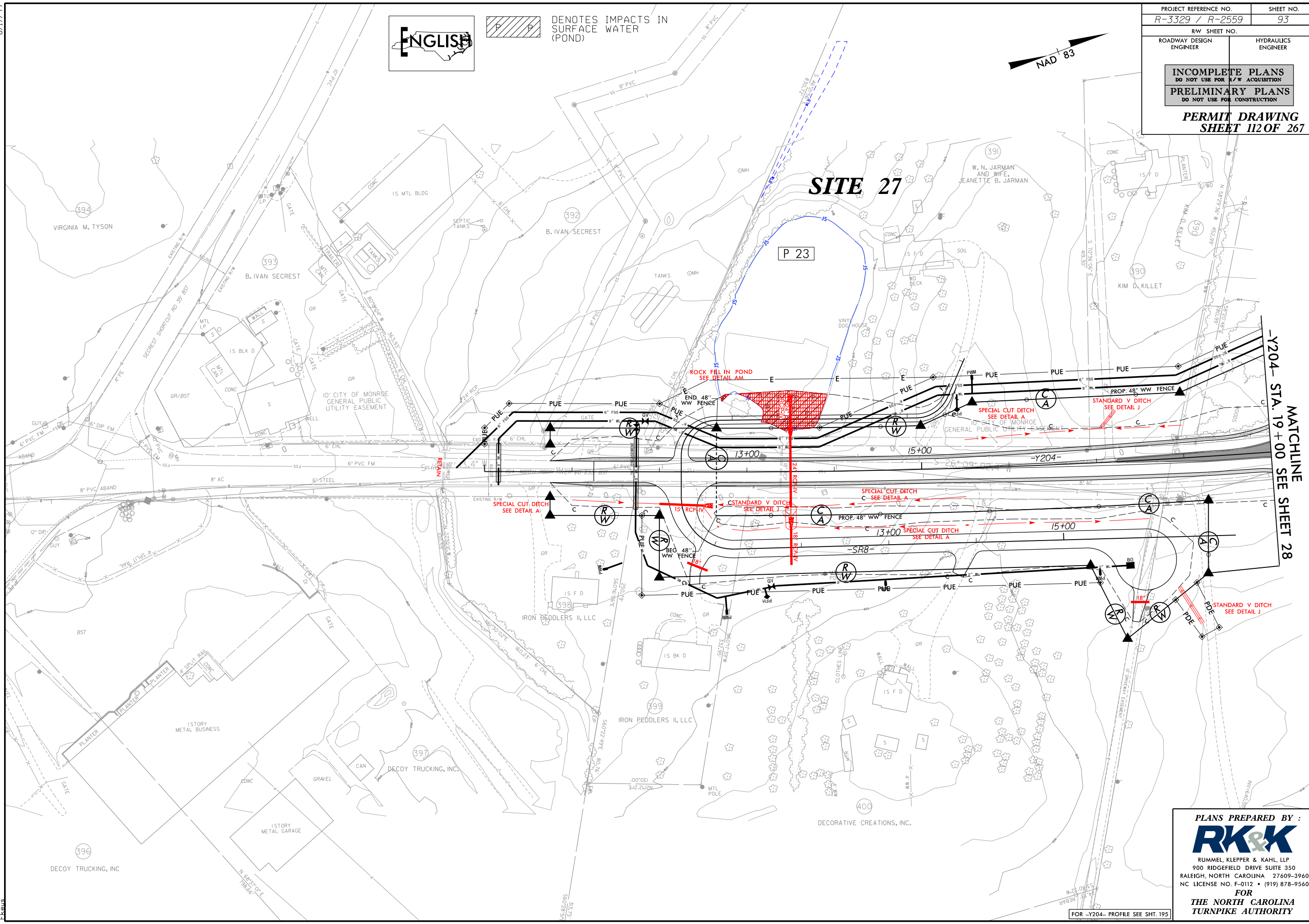
PLANS PREPARED BY :
RK&K
RUMMEL, KLEPPER & KAHL, LLP
900 RIDGEFIELD DRIVE SUITE 350
RALEIGH, NORTH CAROLINA 27609-3960
NC LICENSE NO. F-0112 • (919) 878-9560
FOR
THE NORTH CAROLINA
TURNPIKE AUTHORITY

FOR -L- PROFILE SEE SHT. 136, 137
FOR -Y206- PROFILE SEE SHT. 201

PROJECT REFERENCE NO. R-3329 / R-2559		SHEET NO. 93	
RW SHEET NO.			
ROADWAY DESIGN ENGINEER		HYDRAULICS ENGINEER	
INCOMPLETE PLANS DO NOT USE FOR A/W ACQUISITION PRELIMINARY PLANS DO NOT USE FOR CONSTRUCTION			
PERMIT DRAWING SHEET 112 OF 267			



DENOTES IMPACTS IN SURFACE WATER (POND)



MATCHLINE
-Y204- STA. 19+00 SEE SHEET 28

8/17/99
C:\Users\jcl\Documents\PERMITS_Environmental\Drawings\Section2B\R3329_R2559_HYD_PRM_WET_PSH093.com.dgn

FOR -Y204- PROFILE SEE SHT. 195

PLANS PREPARED BY :
RK&K
 RUMMEL, KLEPPER & KAHL, LLP
 900 RIDGEFIELD DRIVE SUITE 350
 RALEIGH, NORTH CAROLINA 27609-3960
 NC LICENSE NO. F-0112 • (919) 878-9560
 FOR
THE NORTH CAROLINA
TURNPIKE AUTHORITY